

# South Metro Fire



**OSHA Compliance Document**

***SOUTH METRO***

**FIRE**

***FORWARD***

**This manual is intended to satisfy the requirements for FIRE BRIGADES as directed and required by Federal and State OSHA regulations as set forth in the federal register 29 CFR PART 1910.156 SUBPART L FIRE BRIGADES.**

# *SOUTH METRO*

# **FIRE**

## *CONTENTS*

<b>FIRE BRIGADES</b>	<b>OSHA 1910.156</b>
<b>Organizational Statement</b>	<b>Section I</b>
<b>Personnel</b>	<b>Section II</b>
<b>Training &amp; Education</b>	<b>Section III</b>
<b>Firefighting Equipment</b>	<b>Section IV</b>
<b>Protective Equipment</b>	<b>Section V</b>
<b>Pre-Fire Planning</b>	<b>Section VI</b>
<b>OSHA Regulations</b>	<b>Section VII</b>

# ***SOUTH METRO***

## **FIRE**

### **SECTION I**

#### **OSHA, CFR 1910.156**

### ***ORGANIZATIONAL STATEMENT***

The departments **Primary Mission is to provide a range of effective programs designed to protect the property and the inhabitants of the City of West St. Paul and South St. Paul from the adverse effects of Fires, Medical Emergencies, or exposure to Dangerous Conditions created by man or nature.**

This mission is carried out through 38.5 FTE career personnel. The staff of this department is trained and capable to respond to suppress fire, respond to hazardous material incidents to the operations and Technician level, respond to confined space at the operations/tech level, respond to emergency medical alarms, and respond to natural disasters. Personnel conduct minor repairs of equipment and perform weekly checks of all equipment. This department inspects properties to obtain fire code compliance, investigates fires and performs public education.

The department consists of;

- Fire Chief
- Clerical
- Asst. Fire Chief
- Fire Marshal
- Fire Captains
- Lieutenants
- Fire Inspectors
- Firefighters

The level to which we provide emergency medical services is to the E.M.T. level as first responders/ambulance. The certification of the staff is in accordance the Minn. Dept. of Health to E.M.T. level. Department Personnel respond to these calls at two levels;

1. Ambulance and/or engine as a first responder company(s) to assist the A.L.S. unit with patient care in accordance with Medical Direction.
2. Ambulance responds as a B.L.S. company to provide patient care and transportation to the hospital E.R..

Fire suppression activities are those normally conducted in fire department duties. The department minimum staffing is eight (8) personnel on-duty. Should the need arise for additional staff a call-back will be initiated. Should the incident require further staffing a Mutual Aid call will be made. The department has Mutual aid agreements in place with other Fire Departments in Dakota County.

Duties of suppression include but not limited to, due to the fact that incidents can be unique in nature;

1. Establish Command
2. Size-up
3. Rescue
4. Protect exposures

5. Containment
6. Suppression
7. Ventilation
8. Salvage/overhaul
9. Post fire duties
  - a) Fire Investigation
  - b) Work with Fire victim
  - c) Secure or direct securing of the scene

Hazardous material responses are managed by our department and to initiate the response that will deal with the incident. Our department will initiate the Incident Management System, make an attempt to identify the product, and limit access to the site, make attempts for rescue, and make attempts to mitigate if outside the hot zone. Initial activities will be conducted from a safe distance and not from the site itself. Our staff is trained to two different levels; hazardous material Operations Level and Technician Level for rescue. Our staff contacts in the event of an incident is the State Duty Officer and/or Dakota County Special Operations should the response go beyond our training or equipment capabilities. The State Duty Officer and/or SOT will assist with the mitigation and dispatching the appropriate response. Hazardous Material entries will be conducted with a safe methodology and in accordance with safe practice. Upon SOT arrival, our team will assist in the recovery/rescue/mitigation. Training is conducted mainly through in-house and periodically through outside institutions. As allowed by OSHA, department training for specific hazards include gasoline, diesel, chlorine and ammonia.

Duties of Haz Mat include but not limited to, due to the fact that incidents can be unique in nature;

1. Establish ICS
2. Size-up (Priorities (Life safety, Property conservation, Environment))
3. ID product
4. Rescue if it can be safely accomplished
5. Call for appropriate help
6. Isolation & Perimeter
7. Protect Exposures and Evacuation/Protect in place
8. Containment

Confined space responses are handled by our department at the Technician level for specific sites. We may be required to conduct a rescue and or recovery. The main focus of the team is to initiate a rescue in a variety of specific confined spaces. The team will notify the Dakota Special Operations Team should it be identified that the rescue is long term or beyond our training or equipment capabilities. Confined space entries will be conducted with a safe methodology and in accordance with safe practice. Upon SOT arrival, our team will assist in the recovery/rescue. Training is conducted mainly through in-house and periodically through outside institutions.

Duties of Confined Space include but not limited to, due to the fact that incidents can be unique in nature;

1. Establish ICS
2. Size-up (Priorities (Life safety, Property conservation, Environment) type of rescue/hazard)
3. ID Hazard
4. Rescue if it can be safely accomplished
5. Call for appropriate help
6. Isolation & Perimeter

The South Metro Fire Department conducts inspections of all commercial properties and inspections of multiple-dwellings based upon department policy. These inspections are performed with four Inspectors and Fire Company personnel. The Inspectors receive routine training during the course of a year. Fire companies receive periodic training through in-house methods. Inspector training is typically conducted through recognized training institutions.

The department training for incidents will be in accordance and often exceed OSHA standards. Training will be held a minimum of annually. Education will be conducted a minimum of quarterly. Our standard will be to provide a minimum of 4 hours of training and education per month. This training and education will be conducted frequently enough to ensure personnel are to the expected level. The training and education will be “commensurate” with those with duties expected to perform. ( SEE TRAINING SCHEDULE AND OUTLINE ).

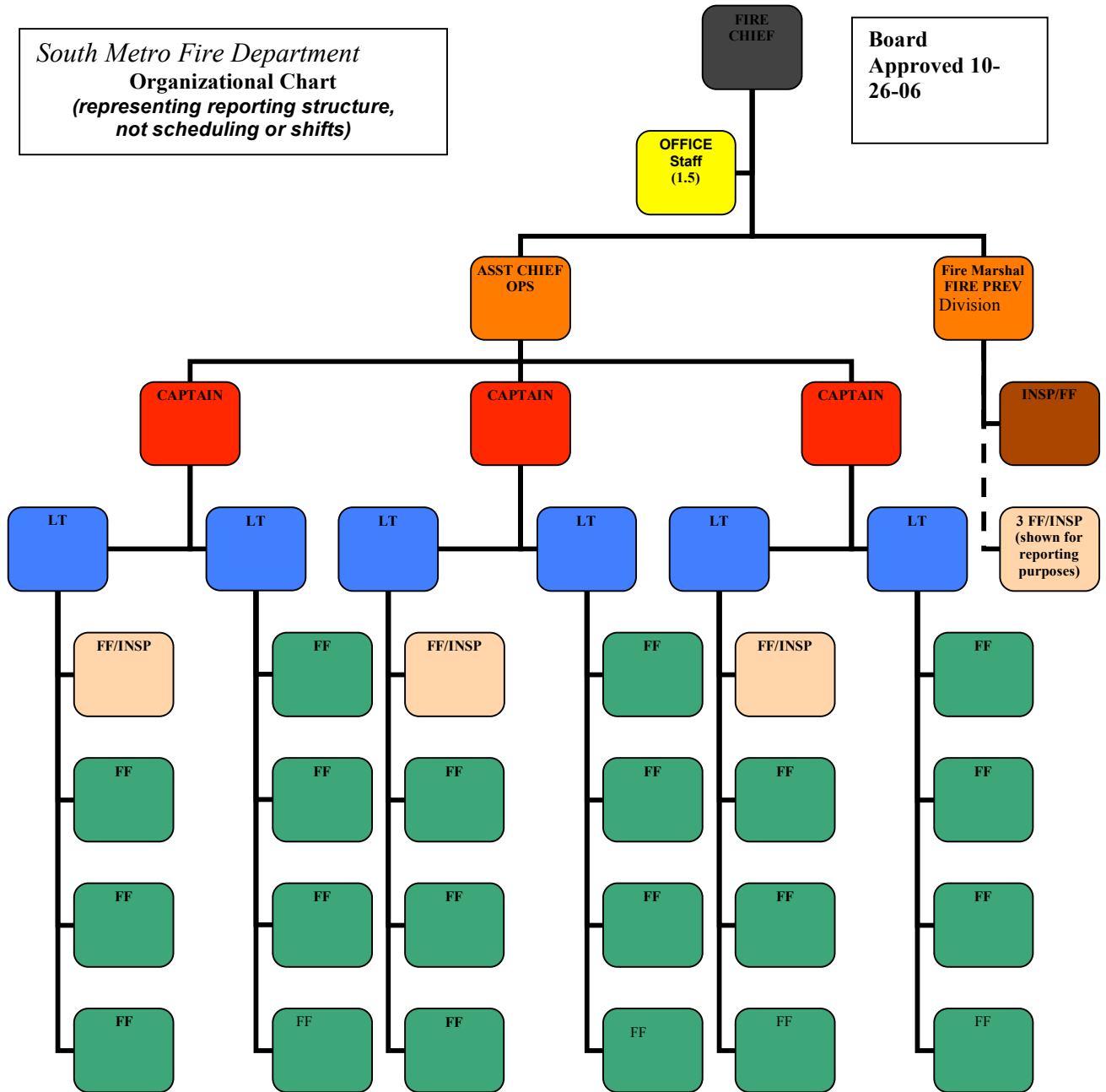
In order to ensure all personnel are current with training, safety, and equipment, all are covered by department policy and reviewed by our Asst. Chief in accordance with Captain reports.

# ***SOUTH METRO FIRE***

**Section II**  
OSHA, CFR 1910.156

*South Metro Fire Department  
Organizational Chart  
(representing reporting structure,  
not scheduling or shifts)*

**Board  
Approved 10-  
26-06**



Note: STAFFING WILL BE REGULATED BY A DEFINED NUMBER AS THE JOINT POWER BOARD DETERMINES NECESSARY.





## ***SOUTH METRO***

# **FIRE**

SECTION II

**PERSONNEL**

OSHA CFR SUB.L1910.156

b)2

The employer shall assure that employees who are expected to do interior structural firefighting are physically capable of performing duties which may be assigned to them during emergencies. The employer shall not permit employees with known heart disease, epilepsy, or emphysema, to participate in fire brigade emergency activities unless a Physicians Certificate of the employee's fitness to participate in such activities is provided. An annual exam will be provided and a Physician will review all personnel in accordance with the respiratory protection plan and hazardous material standards for physicals under the direction of the department's physician.

( SEE MEDICAL REPORTS and Medical director policy )

# ***SOUTH METRO***

## **FIRE**

**SECTION III**  
OSHA CFR 1910.156

### **TRAINING AND EDUCATION**

Training and education will be conducted on a regular basis for department staff. Staff will receive training on a consistent and regular schedule through shift officers within the department. Special training and education will be implemented and coordinated by the Chief, Asst. Chief or Captain.

Staff will be trained and educated in typical and pertinent subjects relating to fire fighting, emergency medical training, hazardous materials, confined space, water rescue/recovery and fire prevention as necessary in areas as the composite indicates.

Officers will receive a higher level of annual training than the balance of the department, this is outlined in department policy. This policy shall include Chief, Asst. Chief, Fire Marshal, Training Captain, Captains and Lieutenants.

Emphases on SCBA will be conducted.

1. Organization & Discipline.
2. Department policies & S.O.P.s.
3. Fire Chemistry & Fire behavior.
4. Fire ground strategy & Tactics.
5. Flammable liquids.
6. Hazardous Material.
7. Ladders.
8. Ropes and Knots.
9. Natural gas emergencies.
10. Gasoline
11. Diesel
12. Chlorine
13. Ammonia
14. Electrical emergencies.
15. Brush & Grass fires
16. Explosives.
17. Search & Rescue.
18. Self contained breathing apparatus
19. Emergency driving procedures.
20. Safe emergency parking of apparatus procedures
21. Elevator emergencies.
22. Forcible entry.
23. Personnel safety.
24. Ventilation procedures.
25. Pneumatic tools.
26. Extrication techniques
27. Fire hose & streams
28. Personnel protective equipment.

29. Fire Ground hydraulics
30. Salvage & overhaul
31. Portable extinguishers.
32. Leadership.
33. Vehicle fires.
34. Arson.
35. Fire Investigations.
36. Hazards of fire fighting.
37. Water supplies & distribution.
38. Pump operations.
39. Apparatus & equipment inspections and maintenance.
40. Elevated Platform operations.
41. Pre-fire planning.
42. Post-fire critiques with ( positive and corrective reinforcement)
43. Building design & construction.
44. Communications.
45. Foam extinguishing agents.
46. Medical emergencies (E.M.T.).
47. Medical Equipment.
48. Disaster planning.
49. Alarm & detection systems.
50. Automatic fire sprinklers.
51. Hood, duct fire protection systems
52. Fire prevention.
53. Fire codes
54. Enforcement.
55. Home fire inspections.
56. Structural fire fighting.
57. Confined Space operation level
58. Air Monitoring
59. Water Rescue

The overall training and education that will be conducted for department staff will be accomplished through the following programs, training manuals and text, memberships, participation in day to day operations, schools, seminars, visual aids.

The following are examples of which represent resources.

**Text & Manuals;**

- ⇒ I.F.S.T.A. Training manuals.
- ⇒ I.F.S.T.A. Essentials of firefighting.
- ⇒ N.F.P.A. Hand book
- ⇒ N.F.P.A. Standards & qualifications.
- ⇒ F.I.R.E. Center- guidelines for training.
- ⇒ M.U.F.C.
- ⇒ M.U.B.C.
- ⇒ E.M.T. Training manual.
- ⇒ Department training & S.O.P. manual.

### **SCHOOLS & SEMINARS;**

- ⇒ Minnesota state fire schools Annual.
- ⇒ Regional fire schools, Periodic.
- ⇒ Minnesota fire marshals association special training.
- ⇒ Vocational institutes.
- ⇒ National Fire Academy.
- ⇒ Community College
- ⇒ Centers for Domestic Preparedness

### **MEMBERSHIPS;**

- ⇒ N.F.P.A.
- ⇒ International Association of Fire Chiefs.
- ⇒ Minnesota Fire Chiefs Association.
- ⇒ International Association of Arson Investigators.
- ⇒ Fire Marshals Association of Minnesota.
- ⇒ Dakota County Mutual Aid Association.
- ⇒ Minnesota Safety Council.

### **PUBLICATIONS & RESOURCES;**

- ⇒ N.F.P.A. Fire Journal.
- ⇒ Fire Command Magazine.
- ⇒ Firehouse Magazine.
- ⇒ Fire Engineering Magazine.
- ⇒ International Association of Firefighters Publication.
- ⇒ International Association of Fire Chiefs Publication.
- ⇒ Minnesota Fire Chiefs Magazine.
- ⇒ E.M.S. Magazines.
- ⇒ D.O.T. Emergency Response Guide.

# ***SOUTH METRO***

## **FIRE**

SECTION IV  
1910.156 subpart L (d)

### **FIREFIGHTING EQUIPMENT**

The employer shall inspect and maintain at least annually fire fighting equipment to assure the safe operational condition of the equipment. Portable extinguishers and respirators shall be inspected at least monthly. Equipment shall be replaced or repaired if found defective. Fire fighting equipment shall be utilized and maintained in accordance with specific standards and policies.

(See attached policy and safety directive)

# ***SOUTH METRO***

# **FIRE**

SECTION V  
29.1910.156 subpart L (e)

## **PROTECTIVE EQUIPMENT**

The following requirements apply to all firefighters who perform interior fire fighting activities. Protective equipment shall be utilized in accordance specific policies and procedures.

See attached Safety Directive